

**WWW.YXLIMITED.COM**  
**CONTACT: +8801799887788**

**GROUND FLOOR, HOUSE#546/2**  
**ROAD# 13 . BARIDHARA DOHS**  
**D H A K A - 1 2 1 2**

**DESIGN .. BUILD .. MANAGE**



**A single touch point for your building services**



leading the way in workplace solutions

## COMPANY PROFILE

We design, make and manage your facility. we represent a fresh approach to facility management, based on smart, innovative building management solutions that target cost effective, sustainable results for our clients' facilities, Our multi-skilled service team with right mind set drive the organization to create right strategic move for its partners. As a service organization, our accountibilities are delivering value , as well as identifying ways of further leveraging our operating model. Our operating model is built on three primary capability levers: People, Process, and Technology. Our tailored property management solutions are designed to meet every changing needs.

## COMPANY PROFILE

To create an environment to adopt modern technologies to optimize resources by offering suitable solutions through a single platform & reshaping the building service industry.

### VISION

VISION

Remove customer pain points of handling different stakeholders. Provide Advance technology, equipment, people, products and services that ensures high standard of customer satisfaction.

### MISSION

MISSION

Professionalism  
Respect  
Integrity  
Transparency  
Trust in culture  
Simplicity

### VALUES

VALUES





delivering creative workplace and facilities management solutions everyday

**DESIGN CONSULTANCY**

ARCHITECTURAL DESIGN  
INTERIOR DESIGN  
ELECTRICAL DESIGN  
AIR-CONDITION DESIGN  
PLUMBING DESIGN  
FIRE SAFETY DESIGN  
VENTILATION DESIGN  
ACCESS CONTROL DESIGN  
SURVEILLANCE DESIGN  
BUILDING AUTOMATION DESIGN

**FACILITY MANAGEMENT**

ELECTRICAL MAINTENANCE  
MECHANICAL MAINTENANCE  
BUILDING REPAIR 24/7  
PROPERTY INSPECTION  
BUILDING MANAGEMENT SYSTEM  
CRITICAL MAINTENANCE SERVICES

ENERGY MANAGEMENT  
ADMINISTRATION AND SUPPORT  
CATERING AND HOSPITALITY  
SECURITY SYSTEMS  
WATER SYSTEMS

**SOLUTION & DEPLOYMENT**

OFFICE FURNITURE  
CCTV & ACCESS CONTROL  
AIR-CONDITIONING SYSTEMS  
OFFICE & KITCHEN EQUIPMENT  
POWER SYSTEMS  
GENERATOR  
LIGHT & LUMINARIES  
INTERIOR SOLUTIONS  
CONSTRUCTION & CIVIL WORKS  
FIRE PROTECTION & DETECTION  
PARKING MANAGEMENT  
EFFLUENT SYSTEMS



## & IMPLEMENTATION



**V**X Services Limited entered in this creative world for offering world class Architectural and Interior design services for Corporate Interiors, Residences Interiors, Restaurant/Hotel Interiors, Showrooms and Banks while making these services affordable for all. Our interior solution is dedicated towards providing harmony between life and lifestyle through an artistic yet futuristic approach.

VX helps clients maximize efficiency and optimize performance by providing professional space planning and total office furniture solutions that transform workspaces and inspiring people. VX experts employ a comprehensive approach to understand each client's unique needs, organizational culture and strategic objectives to creates transparent workplaces that facilitate collaborations, productivity and improved workflow efficiency.

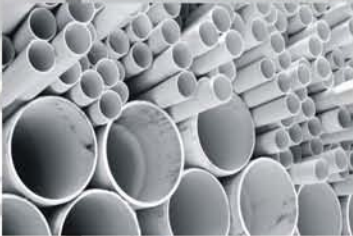
We manage everything from planning and design to installation and execution.

## COMPANY PORTFOLIO



# DESIGN & CONSULTANCY

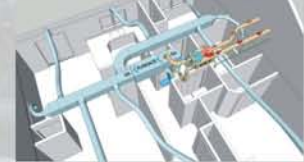
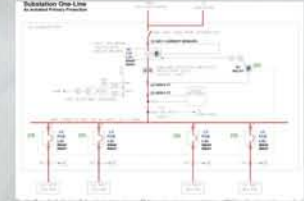
## ELECTRO MECHANICAL



**M**echanical, electrical, plumbing, and HVAC systems are an integral part of any design project. VX's professional MEP engineers will ensure that your building's high-performance systems are safe for occupants, easy to maintain, and cost-effective.

VX offers a range of design, consulting and sustainability services for MEP systems associated with all types of buildings. We support you during the conceptual and detailed design of all MEP systems for new and modified buildings; as well as supervise the implementation of our designs and carry out acceptance tests upon completion.

VX has very qualified and knowledgeable solutions architect, pre & post sales engineers who are some of the best certified and quality engineer in the business to provide any solution for you that just fit right for you. As a highly motivated and talented team of people from diverse backgrounds and experiences, it will be our continuous effort to bring the new technology products or the solutions for each of you to grow together.

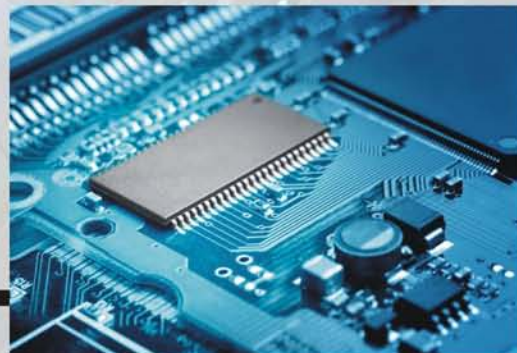
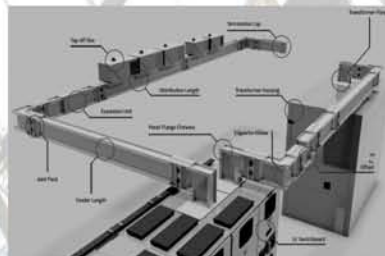


## COMPANY PORTFOLIO



# SERVICES

## LIGHTING & ELECTRICAL



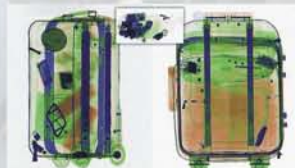
**V**X is serving for a wide variety of stylish new lighting solution and electrical services for all your home and commercial project requirements with quality lighting solutions from a trusted resource in the process of creating unique lighting experiences and environments.

Our product offering with ranges from budget driven fixtures to signature custom fixtures, provides the broadest offering of fixtures and state-of-the-art electrical and lighting technology. We have been trusted by some of the largest corporations in Bangladesh because of our experience, knowledge, and ability to provide cost-effective lighting solutions where they are needed the most.

We are able to offer a variety of solutions to best meet your needs. Our business motto is simple: we have to earn your personal trust and business one job at a time.

## COMPANY PORTFOLIO





# SYSTEMS

**V**X carry all the popular office automation, security and surveillance systems like automatic access control, metal detector, baggage scanner, locks, security cameras, fire detection and protection, under vehicle scanning systems etc.

We provide complete life safety and property solutions including security systems integration including access control for the buildings need high level of protection. Our security work includes design, supply and installation of simple cameras to intrusion detection systems with touch-screen controls that open, close and monitor doors in detention facilities.

In these times of globalization, goods are transported around the world. To protect them from loss or theft on their way from the manufacturer to the consumer, surveillance cameras have become a fixture in logistics and transportation systems also. And network cameras are increasingly used for security, process control, in automatic distribution centers and the places where human guarding is not feasible. With these smart products, you can control your entire business from anywhere in the world.

**SURVEILLANCE & SECURITY**

## COMPANY PORTFOLIO



# EQUIPMENT

## OFFICE, GYM & KITCHEN

**V**X offers the physical equipment of starting an office or a business. Basic office supplies include furniture, telephone systems, stationery, photocopiers, paper shredders, projectors, electronic displays and so on. VX is ready with all supplies that a business needs on operations.

Procurement of Kitchen equipment is not an easy task, but we are here to help. We only offer high quality, branded equipment, so you can trust that our product and services will ease up the pressures of a busy kitchen. Based on advanced concept and the principle of human exercise physiology, continuously upgrading the products range to meet the customers need.

There are variety of products with quality, beautiful appearance, affordable fitness equipment, including various series of commercial strength equipment, professional commercial treadmill, home treadmill, commercial exercise bike & spinning, pool table, table tennis table, dumbbells, weight plates, yoga mats, gym ball and fitness accessory products and so on.

Our particular focus has been developed of technical expertise, institutional strengthening and innovations. Our wide and versatile solutions help corporate & social businesses increase productivity, improve management practices and ensure effective networking with customers & employees.



## COMPANY PORTFOLIO



# MANAGEMENT

## INTEGRATED FACILITY



## COMPANY PORTFOLIO



**V**X is a trusted provider of Facilities Management to businesses in Bangladesh and a supplier of choice with comprehensive solutions ranging from sophisticated asset management and engineering services to traditional hard and soft FM. VX offers complete service integration with one management team, with services delivered and tailored to your specific business needs. Our integrated facilities management services play a pivotal role in improving performance and increasing strategic value for businesses across a range of industry sectors. VX ensures maximize the efficiency of facilities of corporate establishment through strategic sourcing, reductions in energy consumption and responsive engineering services. As the leading facilities manager, we employ proven processes, building management technology and economies of scale that will help corporate clients to reduce the facility operating costs significantly.

We manage every aspect of your facilities to create a safe, compliant environment that increases productivity. We will work with you to develop a comprehensive facility management strategy to achieve your ambitions.

With a strong focus on quality, state-of-the-art solutions and services supported by highly specialized and skilled professionals, the company strives to provide product and services par excellence to its worlds reputed customers.



# MANAGEMENT PROFILE



**CHAIRMAN**

**Sheikh Zillur Rahman**, MBA from IBA, DU and B. Sc in EEE from KUET with 30 years of extensive experience in local, foreign and multinational companies. With his vast expertise, he is leading the organization to deliver quality services in facility management & engineering sectors. Working in notion to make the integrated facility management services available for the organizations by delivering diverse services from single platform.

**Ashfiquir Rahman**, Mechanical Engineering Graduate from BUET with 15 years of experience in electro-mechanical design consultancy, project management, process development and operation management is the prime mover of the organization. With his expertise in business process development, Solution planning, risk assessment, resource optimization and customer centricity, he leads the team of engineering professionals with service mindset.

**MANAGING DIRECTOR**



**DIRECTOR**



**Mozaffar Hossain**, MBA from NSU and B.Sc in EEE from KUET with 13 years experience in service, operation management, system development and project implementation. With his versatile experience, he is leading a team who are developing & maintaining different system and ensuring quality service to meet the customer demand in multinational and local companies.

**Architect Mahboob Hassan**, after graduating from Khulna University served in different layers of different organizations for 15 years which seasoned him to take the challenge in creating innovative space design, Interior works and Building design. His approach is to develop solutions with eco-friendly resources, contemporary perception and sustainable results. With his leadership, a team of highly qualified designers develop and delivers the design built solutions.

**DIRECTOR**



**DIRECTOR**

**Mir Mohammad Ahsan Uddin**, Mechanical Engineer from BUET, with 10 years experience in renowned consultancy firm and leading multinational company where he proved his potential in engineering design, supervision and project management. His expertise include efficient operational modality design of various electromechanical services and financial forecast and reporting to focus engineering economics. For the empowerment of employee he set a good example through his strong leadership.

**Md. Rashedul Anwar**, Masters in Finance and Banking from Dhaka University with 19 years of diverse experience in different capacities with national and multinational companies in the field of business strategies, planning & forecasting, business control and performance management. With his leadership, innovative and inspiring approach, team is contributing in financial services, management of procurement & supply chain operation and vendor relationship.

**DIRECTOR**





# OUR CLIENTS



**V**X manages only one contract with a single point of responsibility. The designer and contractor work together from the beginning, as a team, providing unified project recommendations to fit the Owner's schedule and budget. Any changes are addressed by the entire team, leading to collaborative problem-solving and innovation, not excuses or blame-shifting. Single-source contracting is the culture of collaboration inherent in design-build.

We have one management structure, one transparent place to go for information and one point of contact, our service manager, who ensures that our performance expectations are exceeded.

Having a pool of motivated, multi-skilled, multi-tasking people looking after integrated facilities services across all our sites means great service, great cover and a seamless experience. Because every member of the team is focused on what we need.

